

Cellsorba™ EX

ASAHI **LEUKOCYTAPHERESIS (LCAP)** COLUMN

**Leukocyte removal for
ulcerative colitis and Crohn's disease**



- *For treatment of inflammatory bowel disease (IBD)*
- *Removal of leukocytes, which are implicated in inflammation (granulocyte, monocyte, lymphocyte)*
- *Easy handling
- direct haemoperfusion -*
- *Gamma Sterilized / ETO Free*

Features & Benefits

Features:

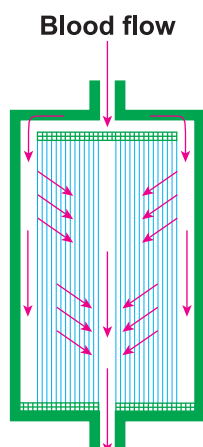
1. INNOVATIVE - LCAP therapy using the leukocyte removal filter, Cellsorba, removes leukocytes, which are implicated in inflammation (e.g. granulocyte, monocyte, lymphocyte). This principle can be used to influence the clinical status of patients in relation to their inflammatory state.
2. EASY - Simple, extracorporeal procedure, which requires approximately one hour per session.

Benefits:

CLINICAL EFFICACY - Remission and improvement were observed in 74% of active ulcerative colitis patients. (Matsumoto. et al. Ther Apher Dial. 12:484-90, 2008)

Structure

Whole blood flows into the cylindrical non-woven fabric. The non-woven fabric removes leukocytes through filtration and adhesion.



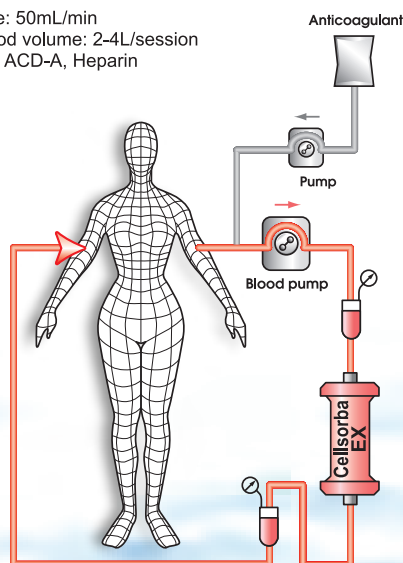
Specifications

Materials	Non-woven fabric made of polyethylene terephthalate
Column volume	170 mL
Column dimensions	200mm[L] - 45mm[D]
Sterilization	Gamma-Ray

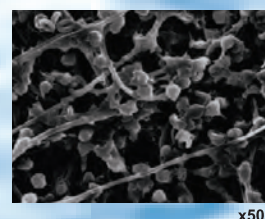
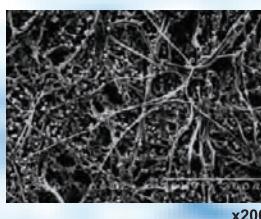
Circuit Diagram

Condition

- Blood flow rate: 50mL/min
- Treatment blood volume: 2-4L/session
- Anticoagulant: ACD-A, Heparin



Scanning Electron Micrograph pictures of leukocytes on the non-woven fabric of Cellsorba EX



Asahi**KASEI**

Manufacturer:

ASAHI KASEI MEDICAL CO., LTD.

1-105 Kanda Jinbocho, Chiyoda-ku, Tokyo 101-8101, Japan

TEL: +81-3-3296-3727 FAX: +81-3-3296-3722

URL: <http://www.asahikasei-medical.com>

Represented in Europe by:

ASAHI KASEI MEDICAL EUROPE GmbH

Herriotstrasse 1, 60528 Frankfurt am Main, Germany

TEL: +49 (0) 69 66 37 15 00 FAX: +49 (0) 69 6 66 51 93

Represented in Americas by:

ASAHI KASEI MEDICAL AMERICA INC.

3570 Winchester Road, Suite 101, Memphis, Tennessee 38118, USA

TEL: +1-901-362-6105 FAX: +1-901-362-6180

CE
0086